

SHEET PILE GUIDE FRAMES

WALKWAY WALINGS & TRESTLES



	Weight
4m Trestle	2.5T
6m Trestle	3.0T
12m Walkway Waling	2.8T
24m Walkway Waling	6.2T
12m Bottom Waling	1.8T

A complete temporary guide frame system to hold and support a panel of steel piles whilst they are installed. Guide walings are incorporated at two levels to provide precise guidance and support. Upper walings are designed as personnel walkways in accordance with current regulations, end trestles provide safe personnel access and full structural support. The system readily transports as one load and can be quickly assembled on site using proprietary connectors. Working panel lengths of either 12 or 24 m (40' or 80') can be accommodated with upper walings at either 4 or 6 m (13' or 20').



walkway walings

- BOX GIRDER CONSTRUCTION PROVIDES IMMENSELY STIFF LATERAL SUPPORT TO THE SHEET PILES. NEGLIGIBLE DEFLECTION OCCURS EVEN WITH LONG PILES (e.g. 20 METRES).
- 750MM WIDE WALKWAYS PROVIDE A SPACIOUS WORKING PLATFORM.
- GUARDRAILS ENABLE OPERATIVES TO WORK WITH BOTH HANDS WITHOUT FEAR OF FALLING.
- STRESSED AND SLEEVED WIRE CONSTRUCTION IS RESILIENT TO DAMAGE FROM SHEET PILES.
- THE PRE-CAMBERED WALING SHEDS WATER AND OIL SPILLAGE FROM EQUIPMENT.
- NON-SLIP UPPER SKIN PROVIDES A SAFE WORKING ENVIRONMENT.
- TOE BOARDS ARE INCORPORATED INTO THE CONSTRUCTION OF THE WALING.
- LIFTING POINTS ARE PROVIDED, RECESSED TO PREVENT A TRIPPING HAZARD.
- HOOK BOLTS AND CROSS MEMBERS ARE PROVIDED FOR THE "FIRST GATE" OR FOR THE INDIVIDUAL H, BOX OR PIPE PILE INSTALLATION.
- "T" BRACKET FOR 'TRAILING END' WALING SUPPORT IS ALSO PROVIDED.

trestles

- PURPOSE MADE SUPPORT STRUCTURE FOR TOP AND BOTTOM WALINGS.
- PROVIDES ACCESS TO TOP WALINGS
- INCORPORATES A SAFE WORKING AREA FOR POSITIONING THE TOP WALINGS (this occurs twice in every panel of piles).
- DESIGNED FOR MAXIMUM STABILITY.
- DISMANTLES SIMPLY FOR COMPACT STACKING, CHEAP AND EASY TRANSPORT.
- SPECIAL CLAMPS LOCK THE WALINGS IN POSITION.
- MANY SMALL DETAILS ARE INCORPORATED AS A RESULT OF YEARS OF PRATICAL PILING EXPERIENCE.
- ALL REQUIREMENTS OF THE FACTORIES ACT HAVE BEEN BUILT INTO THIS EQUIPMENT.



DAWSON
CONSTRUCTION PLANT LTD

DAWSON CONSTRUCTION PLANT
CHESNEY WOLD,
BLEAK HALL,
MILTON KEYNES,
MK6 1NE
ENGLAND

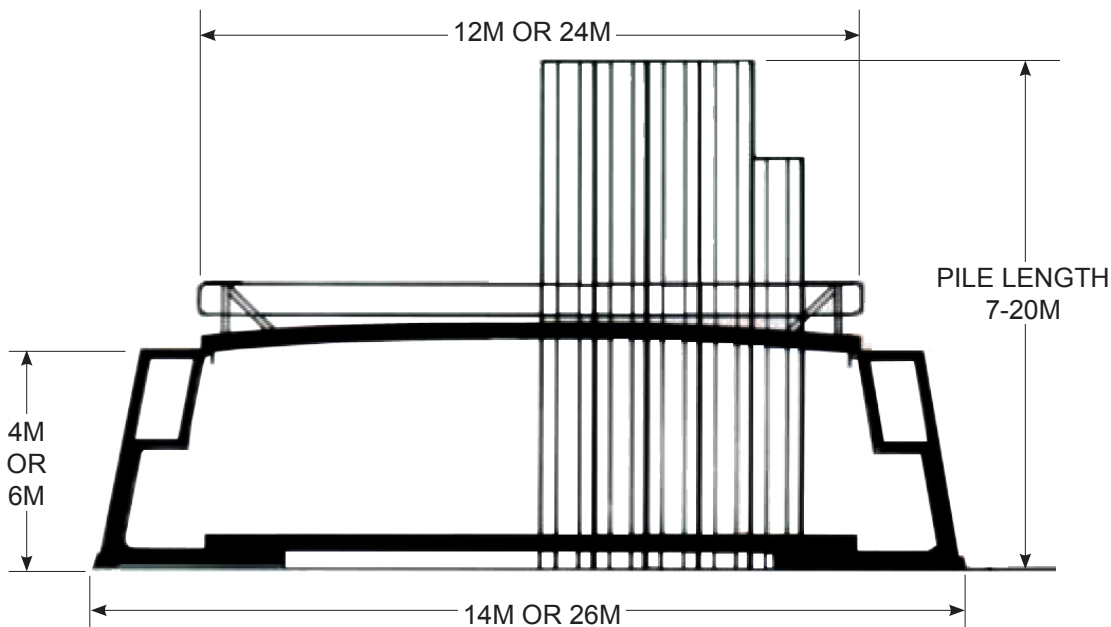
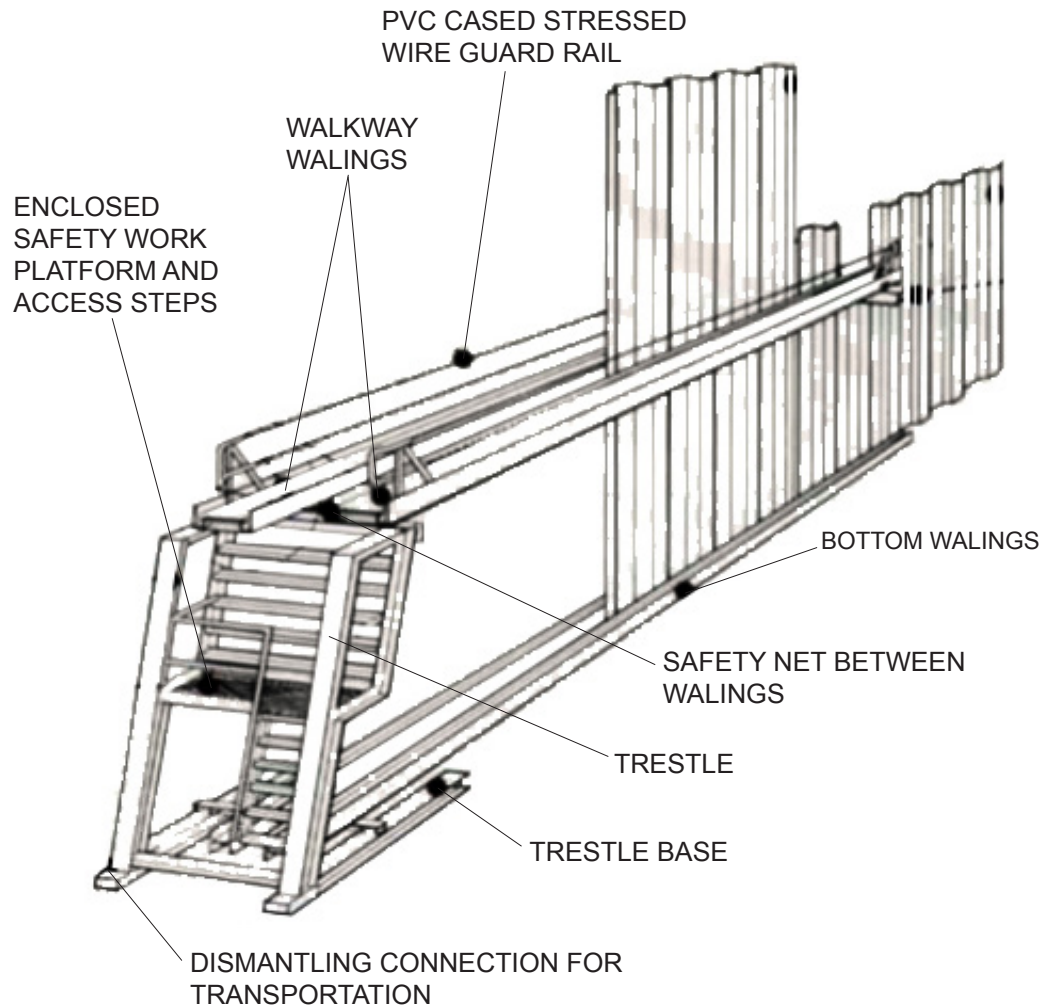
TEL. +44 1908 240300
FAX. +44 1908 240222
EMAIL. DAWSON@DCPUK.COM

**WORLDWIDE
DEALER
NETWORK**

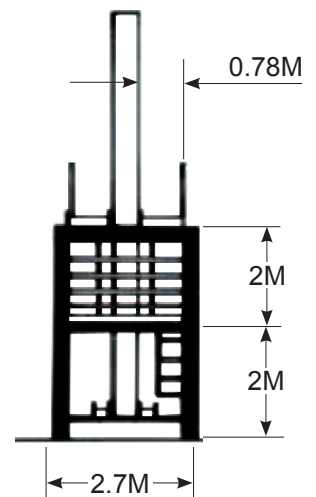
**GLOBAL
SUPPLY,
LOCAL
SUPPORT.**

www.dcpuk.com

SHEET PILE GUIDE FRAMES WALKWAY WALINGS & TRESTLES



SIDE ELEVATION



END ELEVATION