

CHAIN CLAMP

INNOVATIVE
PILING
EQUIPMENT

DAWSON CONSTRUCTION PLANT
CHESNEY WOLD,
BLEAK HALL,
MILTON KEYNES,
MK6 1NE
ENGLAND

TEL. +44 1908 240300
FAX. +44 1908 240222
EMAIL. DAWSON@DCPUK.COM

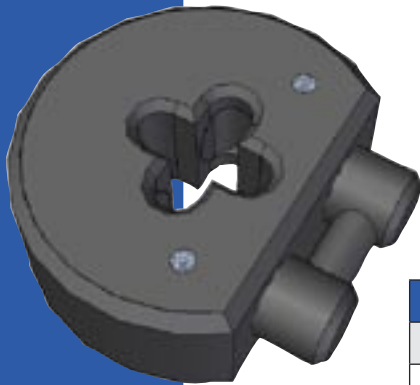
www.dcpuk.com

CHAIN CLAMP

For all lifting applications. The unit indexes along the links of the chain and locks into place giving a quick and simple chain lock for lifting.

Features

- . SWL of 2000kg for the 8mm chain clamp
3200kg for the 10mm chain clamp
- . Robust high strength steel body
- . Designed to withstand vibration - no screws or bolts!
- . Minimal parts for durability
- . Proof loading to twice the safe working load
- . Quick coupling and release from load



| Part Number | Chain Type | Safe Working Load |
|-------------|------------|-------------------|
| TLR 360 | 10mm | 3.2 Tonnes |
| 4082 | 8mm | 2 Tonnes |

