

# SHEET PILING: SUSTAINABLE CONSTRUCTION



## DAWSON PRODUCT RANGE

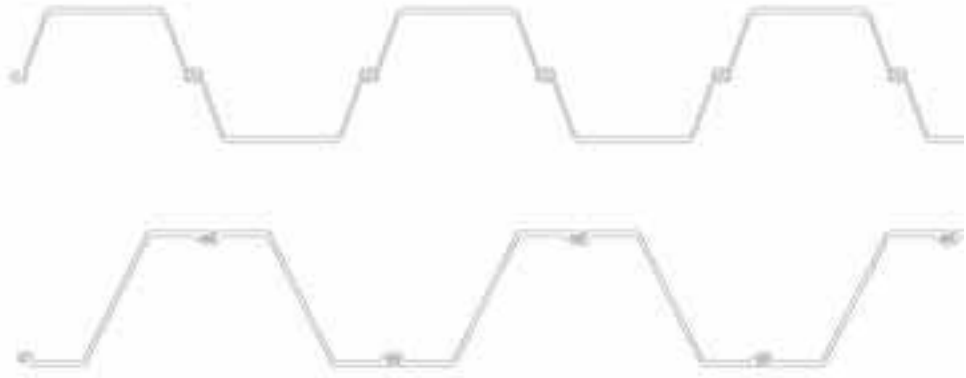
- »» Push Pull Foundation Piling
- »» Quiet / vibrationless Sheet Piling
- »» Hydraulic Impact Hammers for Foundation Piles, Sheet Piles, Conductor Piles
- »» Excavator Mounted Vibrators
- »» High Frequency Vibrators
- »» Hydraulic Extractors to 1000 tonnes
- »» Track Mounted Leader Rigs with Vibro, Single and Double Rotary Drill and Impact Hammer
- »» Pile Capping System
- »» Sheet Pile Threaders
- »» Remote Release Lifting Shackles
- »» Special Handling Tools
- »» Cleaners for Continuous Flight Augers



DAWSON CONSTRUCTION PLANT LTD  
Chesney Wold Bleak Hall Milton Keynes MK6 1NE England  
Tel: (01908) 240300 Fax: (01908) 240222  
Int.Tel: +44 1908 240300 Int.Fax: +44 1908 240222  
Email: dawson@dcpuk.com Website: dcpuk.com



**DAWSON**  
CONSTRUCTION PLANT LTD



## PUSH PULL SYSTEM SHEET PILING

- »»» Fast drive rate delivers economic installation cost
- »»» Quiet
- »»» Vibrationless
- »»» Alternatively very low amplitude, very high frequency vibration can be applied in appropriate conditions
- »»» Fast rate of driving for high productivity
- »»» Can be re-configured to suit Z, U & H profiles in lines and 4, 5, or 6 sheet box piles. Configurations for 2 to 6 steel elements
- »»» Can Drive & Extract with 200 tonnes force in both directions
- »»» Leader rig mounted or crane suspended
- »»» Special jaw permits piling up to the 'Boundary' of adjacent property

A Dawson sustainable construction product





## OPTIONS



Conventional 'U' profiles



Conventional 'Z' profiles



Hit & Miss 'H' profiles



Special application, restricted headroom

## Pile Pressing is sensitive to soil conditions

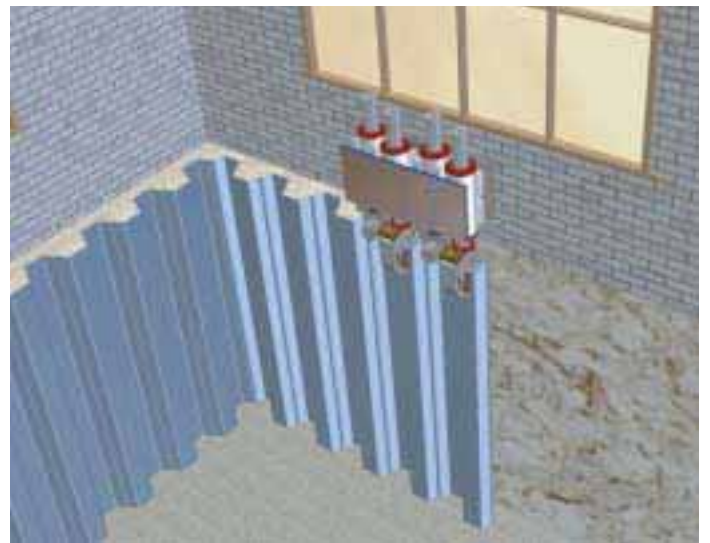
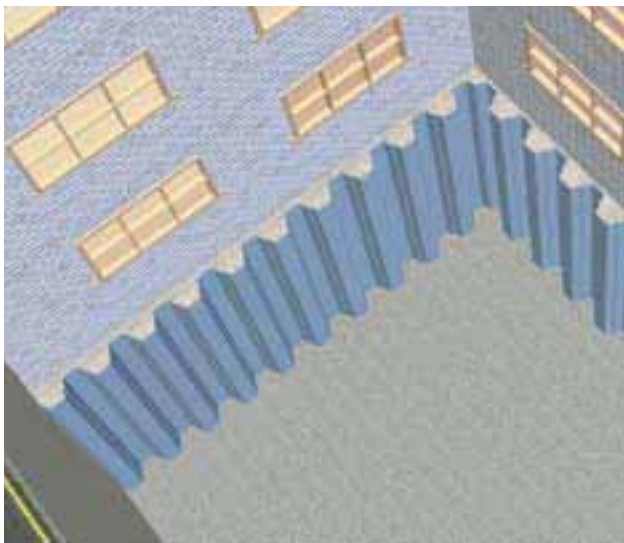
Problems caused by unsuitable soils can in most cases be overcome using a variety of techniques.

Dawson Construction Plant would be pleased to advise.

Options include:

- Pre-augering
- Pressing with high frequency vibration ( 120hz ) at low amplitude

## NOTES



### Boundary Piling

- Enables sheet piles to be driven up to the site boundary
- Can be done with standard "Z", "U" and High Modulus profiles
- Does not need special profiles or machines, just small modifications to the jaws