



Harbour



Motorway



Rail



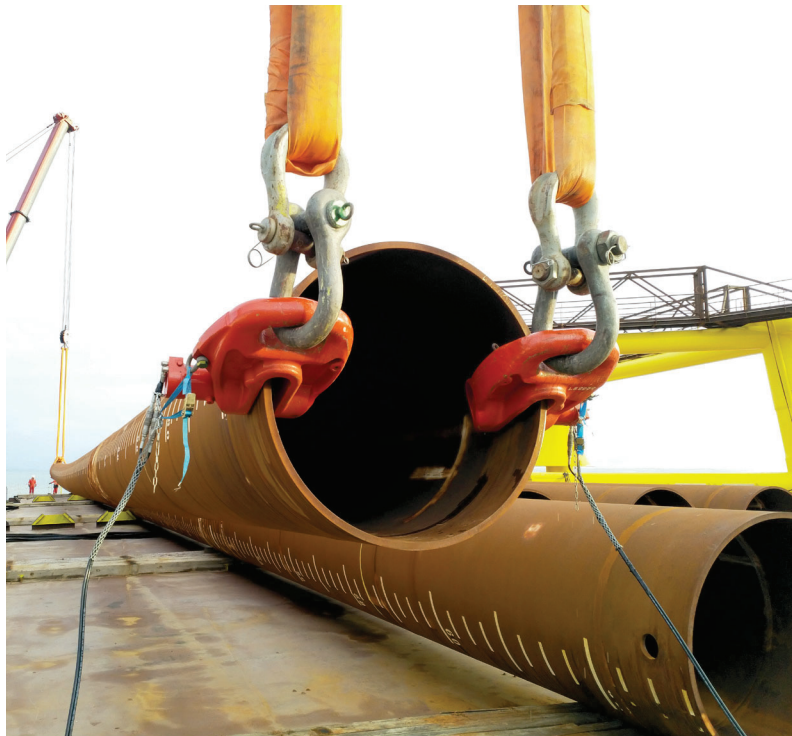
Basement



Sustainable
Foundation



Specialist Work >

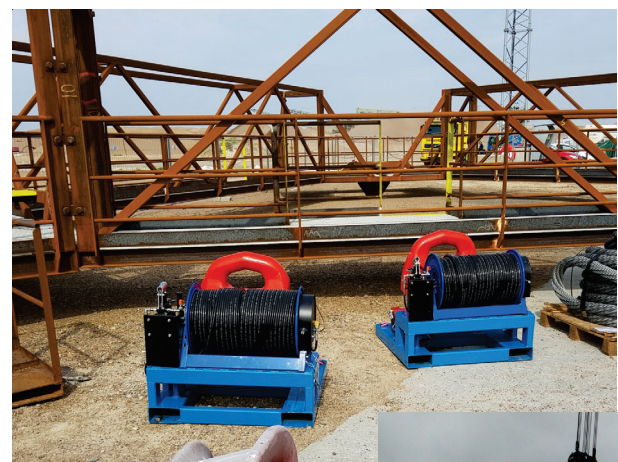
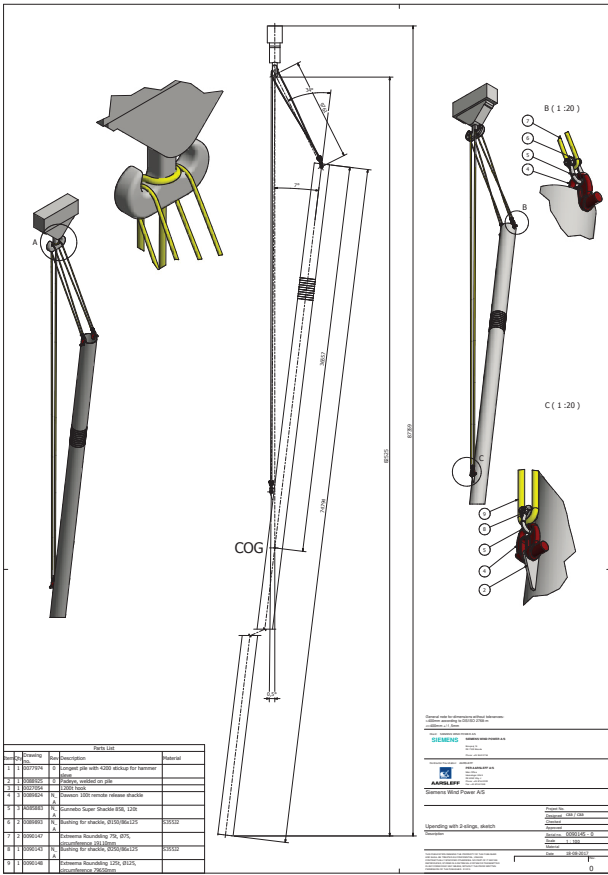
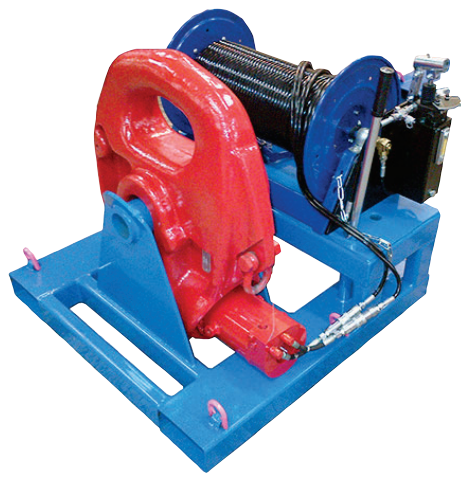


REMOTE RELEASE PILE LIFTING

Nissum Bredning Project, Denmark (2017)



▼ Dawson Construction Plant supplied Per Aarsleff A/S via Nor-Trade DCP's Scandinavian distributor based in Denmark, 2 off 100 tonnes hydraulic remote release lifting shackles complete with a 120m activation hose reel. The pair of shackles were used to lift 8no. 74m long tube piles at a dia of 1450mm. Wall Thickness 35mm at the top of the pile, up to 45mm for the lower section. Total weight 96 tonnes. Each shackle was placed 180 degrees at 3 and 9 o'clock in position for a balanced lift. The 100t shackles were selected to provide a remote release pin mechanism operated via 120m of hose reel. When the tubes were located safely into position underwater on this offshore wind farm project an hydraulic pump was activated to release the lifting pin. The hire period lasted 6 weeks due to varying weather conditions at the job site. Using the 100 tonnes remote release shackles, ensured a safe lift from start to finish in a controlled manner.



DAWSON
CONSTRUCTION PLANT LTD

Dawson Contract Piling Ltd
Chesney Wold,
Bleak Hall,
Milton Keynes,
MK6 1NE, England
Tel: +44 (0)1908 240300
Fax: +44(0)1908 240222
www.dcpuk.com