

# DAWSON CONSTRUCTION PLANT



Harbour



Motorway



Rail



Basement



Sustainable  
Foundation



Specialist Work >



## DCP DUO Capping System UK (2019)

Combining the Dawson Redeb Capping Support System and Peri Duo Formwork System.

DCP DUO System is characterized by its speed and ease of installation. Not only the material used is very innovative the entire concept is !!! sheet pile capping walls can easily and efficiently be formed with only a minimal number of components allowing the DCP DUO System to be assembled removed and re-used by unskilled labour.

Its unique innovation and fitment negates the old fashioned need of drilling, welding or cutting of piles on the majority of pile types. Its revolutionary design removes the use of wood panels and the time consuming cutting of plywood to match pile profiles, saving valuable environmental resources on and off site with no waste materials. The formlining can be changed easily and

quickly with no need for special tools or skills, re-used hundreds of times.

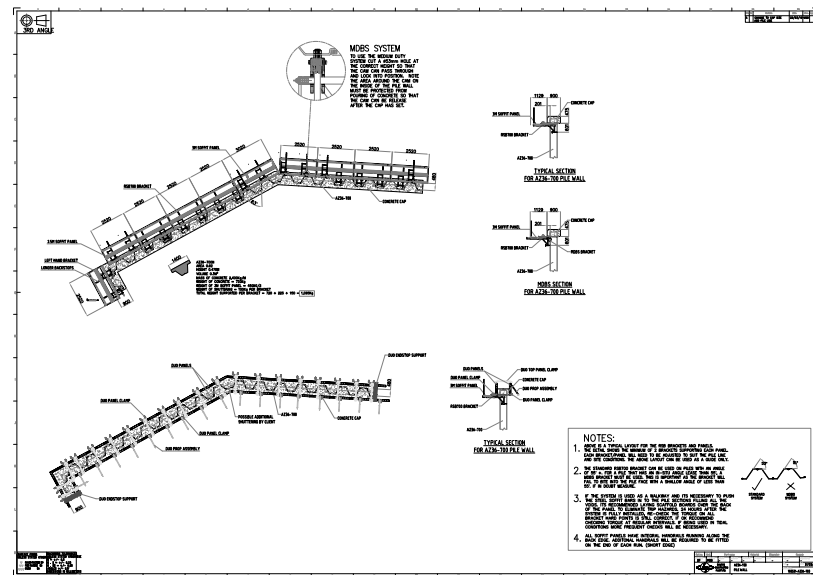
All parts are 100% recyclable!

**Warrington Cenotaph** is a Grade II listed monument and is part of the Bridge Street Conservation Area. Listed Building Consent and planning permission were required for the improvement works to take place. The budget for the scheme is anticipated to be around £1.1m.

The objective is to structurally improve the supporting river bank to the north of the Cenotaph by installation of 25m AZ36-700 sheet pile wall with a 900 x 475mm concrete cap cast in-situ.

R.Betts Construction hired the Dawson DUO System for the above and the system proved very successful.





## Customer's Testimonial:

*'R Betts Construction used the New Dawson DUO Capping System on the recent Warrington Cenotaph project, after a piling wall had been installed to stabilise the river bank. We were amazed at The DUO Systems speed and ease of use both on install and removal saving time and resources with no waste material. It is an excellent fast and effective system and would definitely use again.'*

*Ian Scully  
Director-R Betts Construction'*



**DAWSON**  
CONSTRUCTION PLANT LTD

Dawson Construction Plant Ltd  
Chesney Wold,  
Bleak Hall,  
Milton Keynes,  
MK6 1NE, England  
Tel: +44 (0)1908 240300  
Fax: +44(0)1908 240222  
[www.dcpuk.com](http://www.dcpuk.com)